



SENTINEL

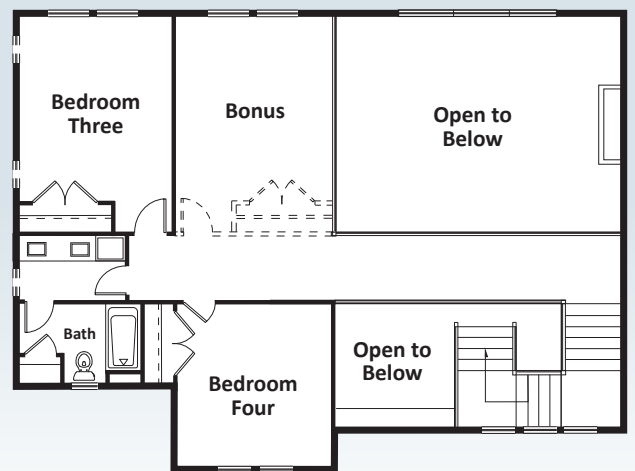


3,479 sq. ft. • 4 Beds, 3.5 Baths • Great Room • Main Floor Primary and En Suite Luxury 5-Piece Bath
 Guest Suite • Covered Patio • Bonus Room/Optional 5th Bedroom



Main floor: Foyer, Den/Home Office, Great Room with Fireplace and adjoining Covered Patio, Chef's Kitchen with designer Appliances and Pantry, Primary with En Suite luxury 5-piece Bath and large Walk-in Closet, Guest Suite with Private Bath, Laundry and Mud Rooms, Covered Porch, and 3-Car Garage.

Upper floor: Bonus Room/Optional 5th Bedroom, 2 Additional Bedrooms and Full Bath.



LAKE16.COM

Disclaimer: Renderings, photos, floor plans, prices, and all content, including all verbiage, are not contractual documents, and are subject to change at any time. Call Bruce Lystad for details.