

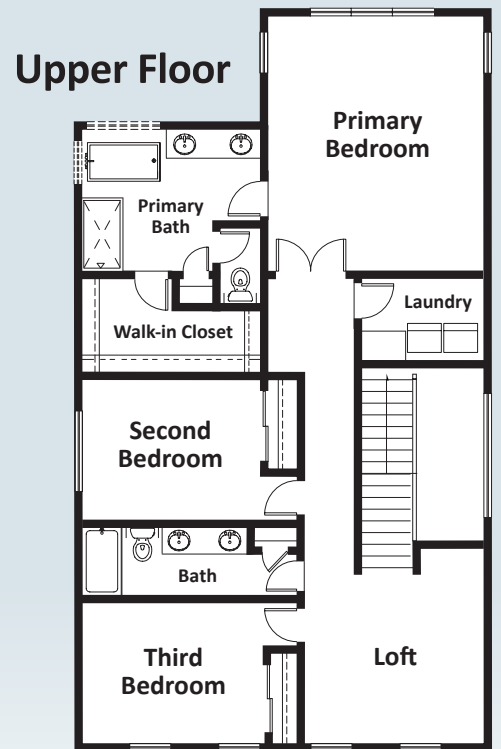


CASCADE

- 2,846 sq. ft.
- 4 Beds, 3.5 Baths
- Great Room
- Den/Home Office
- Primary with 5-piece Luxury Bath
- Flex/Guest Suite Options
- Patio and Covered Deck
- 3-Car Garage



Main floor: Foyer, Den/Home Office, Great Room with cathedral ceiling and Fireplace, Dining Room, Covered Deck, Chef's Kitchen with designer Appliances and Pantry, Flex or Guest Suite with Full Bath, Mud Room, Powder Room, and 3-Car Garage.



Upper floor: Primary with 5-piece luxury Bath and large Walk-in Closet, Oversized Bedrooms with Closets, Full Bath, Laundry Room, and Loft.

LAKE16.COM

Disclaimer: Renderings, photos, floor plans, prices, and all content, including all verbiage, are not contractual documents, and are subject to change at any time. Call Bruce Lystad for details.